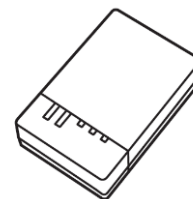


**DAIKIN**

# OPERATION MANUAL

---

## Wireless LAN connecting Adaptor for Ducted Split Systems

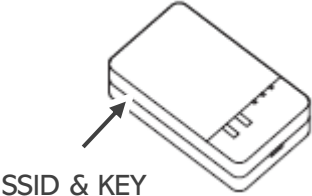


---

**MODEL: BRP15B61**

To provide secure control of the air conditioner, a fixed KEY associated with the SSID number of the interface will be requested by the App any time a new device is connected for the first time.

The KEY and SSID number are printed on the side of the interface.



For convenience, please record the KEY and SSID number in the space below.

<p>SSID: DaikinAP _ _ _ _ _</p> <p>KEY: _ _ _ _ _</p>
---

# CONTENTS

1. Features	. . .	4	7. On/Off Timer	. . .	17
2. About the App	. . .	6	7.1. Overview	. . .	17
2.1. Set Up the App	. . .	5	7.2. Edit Action	. . .	18
2.2. App menu	. . .	6	8. DEMO mode	. . .	19
2.3. Displayed icons	. . .	7	9. General settings	. . .	20
3. Initial setup	. . .	8	9.1. Reinitialize application	. . .	20
3.1. Add an adapter	. . .	8	9.2. Temperature unit	. . .	20
3.2. Set a unit name and icon	. . .	9	9.3. Push notification	. . .	21
3.3. Set up “Out-of-Home” (Not at home)	. . .	10	9.4. Dealer Contact	. . .	22
4. Log in “Out-of-Home” (Not at home)	. . .	11	9.5. License agreement	. . .	23
5. Units overview (Home)	. . .	12	9.6. Application version	. . .	23
5.1. Overview	. . .	12	Appendix	. . .	24
5.2. Edit Units	. . .	13			
6 Operation Setting	. . .	14			
6.1. Operation Screen setting	. . .	14			
6.2. Zone Control setting	. . .	15			
6.3. Airflow direction setting	. . .	16			

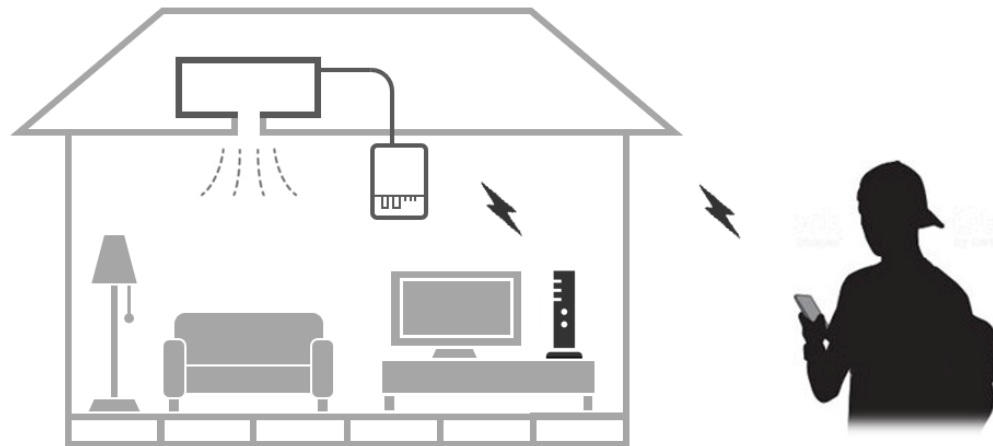
# 1. Features

This app is useful in the following situations:

When you want to turn your Ducted Split Systems ON or OFF while outside the home

When you want to check the status of your air conditioner while outside the home.

→ **4. Log in “Out-of-Home” (Not at home)**



When you want to custom-fit unit operation to your lifestyle.

→ **7. On/Off Timer**

Set the days of the week and times that specific operations start and end, and other detailed settings.

## 2. About the App

### 2.1. Set Up the App

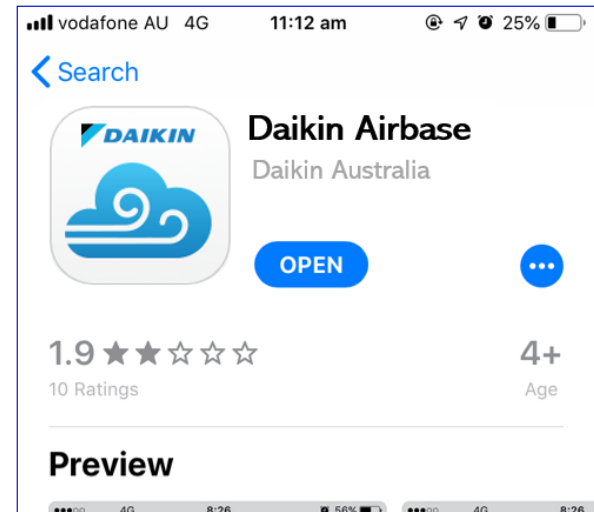
a) From your smartphone, go to Apple App Store or Google Play Store to download and install the **Daikin Airbase** app.



The app supports:

- iPhone®: iOS v.8.0 and above.
- Android™ Phone: Android™ v.5.0 and above.

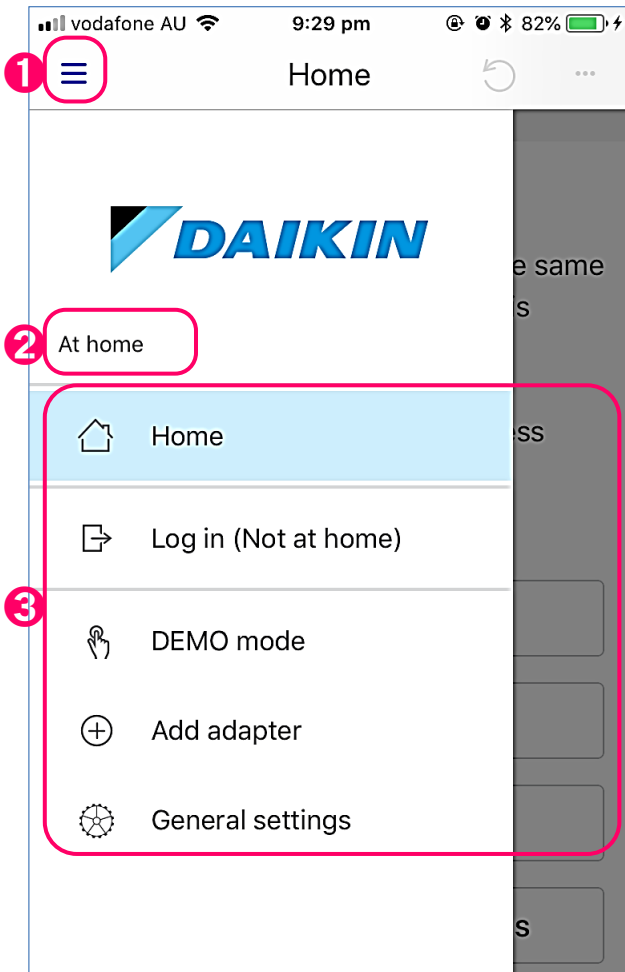
b) Tap the **Daikin Airbase** app to launch it.



# 2. About the App

## 2.2. App menu

The App menu can be accessed by tapping the ☰ Menu on the screen.



[About the screen]

**1** Tap to open/close the App menu.

**2** Displays the current status of the connection with the system.  
“In-Home” (At home): Connected via domestic LAN. Displays when operating from indoors.  
“Out-of-Home” (Not at home): Connected via server using “Out-of-Home” (Not at home) function. Displays when operating from outside the home.

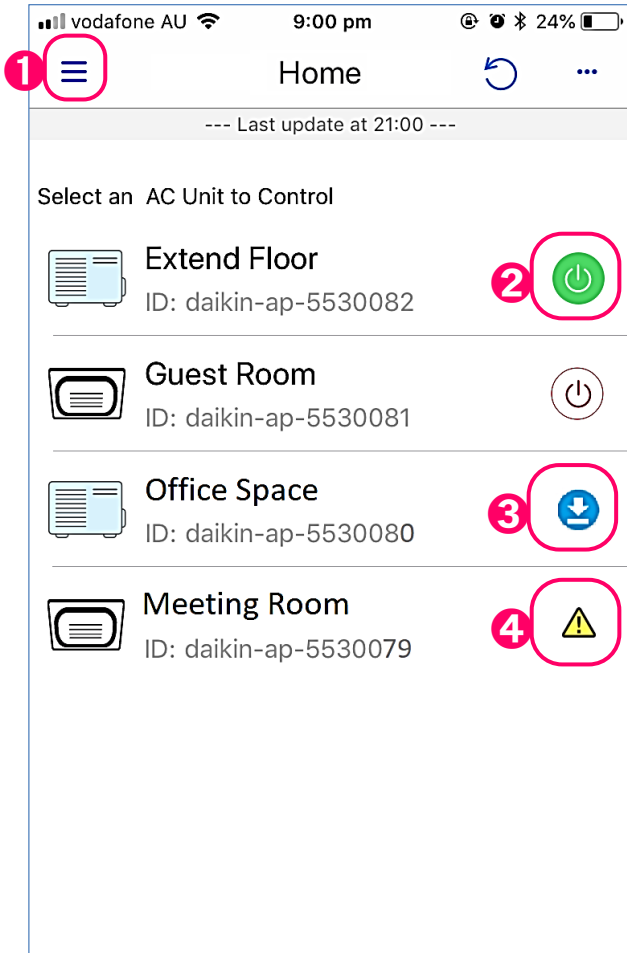
**3** App menu items

- Home
- Log in (Not at home) “Out-of-Home”
- DEMO mode
- Add adapter
- General settings

## 2. About the App

### 2.3. Displayed icons


Each icon indicates a state of the unit, adapter or settings.




[About the screen]

1 Tap to open/close the App menu.

2 Tap to turn On/Off the unit.

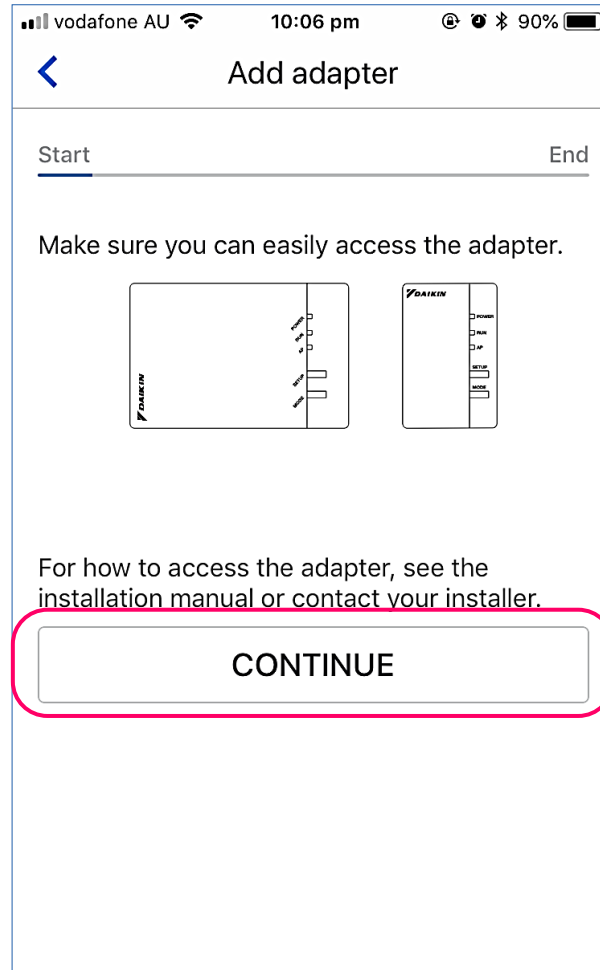
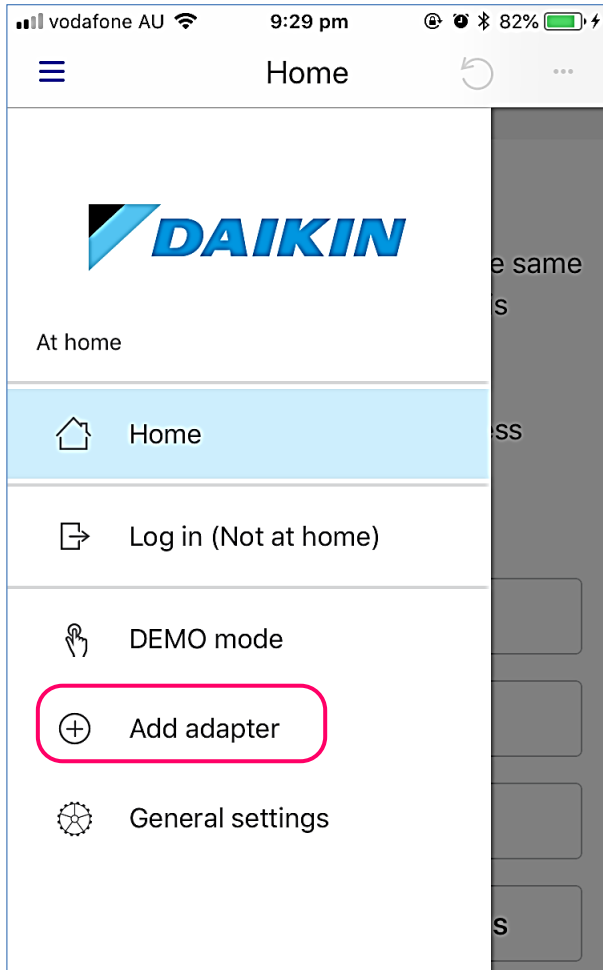
3  Firmware update is available.  
Tap the unit name to update the firmware.

4  An error has occurred.

# 3. Initial setup

## 3.1. Add an adapter

- 1) Tap “Add adapter” on the App menu.
- 2) Follow the on-screen instructions to connect an adapter to your home network.



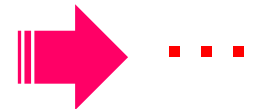
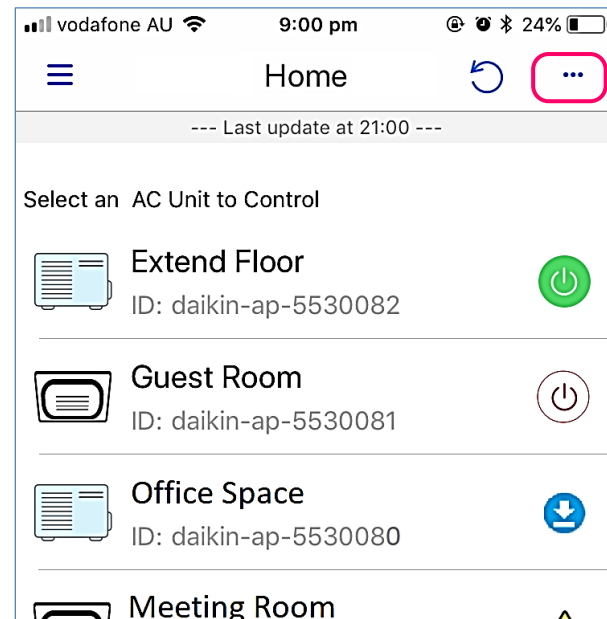
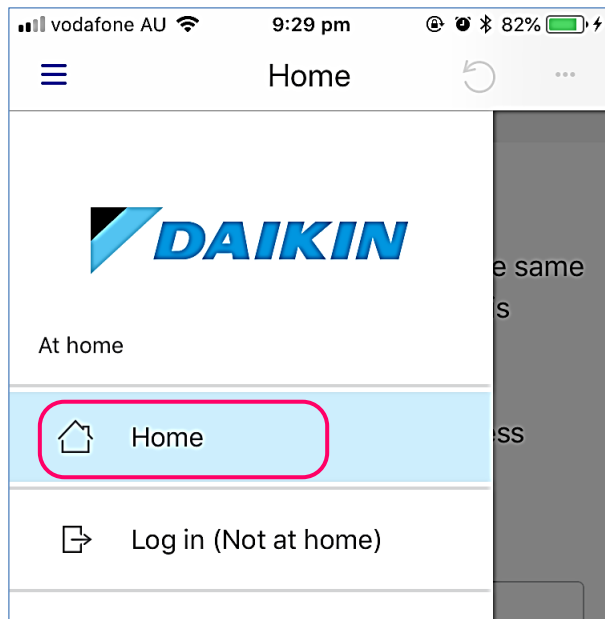


# 3. Initial setup

## 3.2. Set a unit name and icon

- 1) Tap “Home” on the App menu.
- 2) Tap the more options menu icon in the top right of the screen.  
→ **5.1. Overview**
- 3) Tap “Edit the names” to set a unit name and icon.  
→ **5.2. Edit Units**

To use the unit when outside the home, follow the procedures in

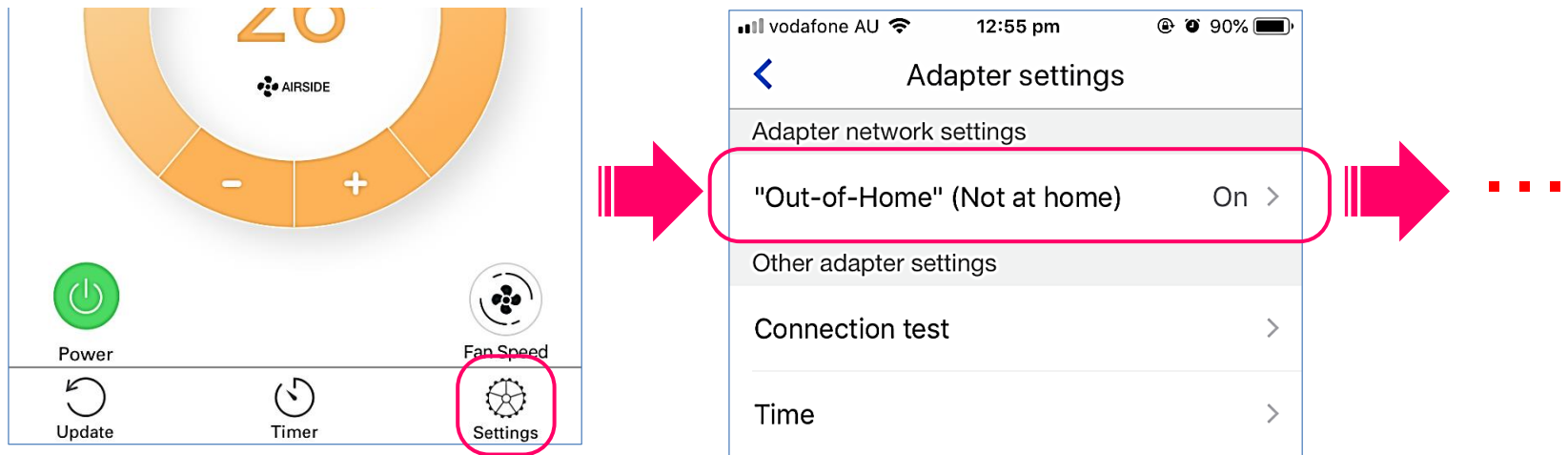


# 3. Initial setup

## 3.3. Set up “Out-of-Home” (Not at home)

After completing setup, you will be able to operate the unit from outside the home.

- 1) Tap “Home” on the App menu.
- 2) Tap the name of the unit that you want to operate from outside the home.  
→ **5.1. Overview**
- 3) Tap the gear icon in the bottom right of the screen to open the Adapter settings screen.  
→ **6.1. Operation Screen setting**
- 4) Tap “Out-of-Home” (Not at home)” and on the next screen slide the bar to ON.  
→ **4. Log in “Out-of-Home” (Not at home)**



## 4. Log in “Out-of-Home” (Not at home)

You can check the status of units or change their operation settings while outside the home.

The screenshot shows a mobile application interface for logging in. At the top, there is a back arrow and the title 'Log in'. Below the title, there are four main sections highlighted with red boxes and numbered callouts:

- 1**: A red box encloses the 'Login ID' and 'Password' input fields.
- 2**: A red box encloses the 'Remember my password' checkbox.
- 3**: A red box encloses the 'Auto login' checkbox.
- 4**: A red box encloses the 'Log in' button.

### [Note]

- Some functions cannot be set in ““Out-of-Home” (Not at home)” mode.
- When operating the air conditioner from outside the home, it takes approximately 1 minute until changes are reflected in the settings. During this time, only the final setting will be reflected, regardless of how many times the settings are changed.

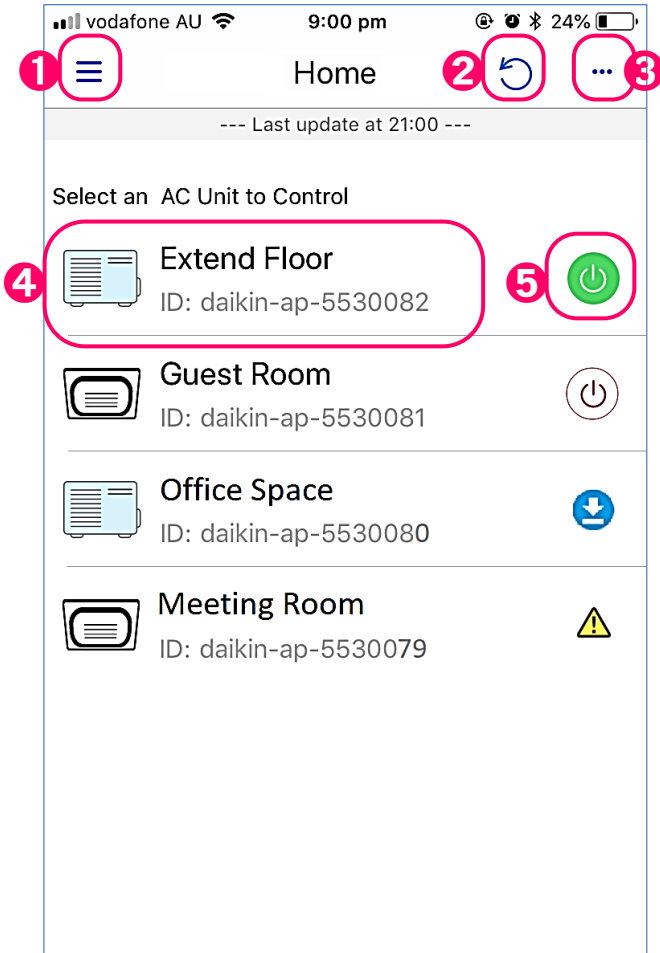
[About the screen]

- 1** Enter the Login ID and password for “Out-of-Home” (Not at home) set from the Adapter settings screen.  
→ **3.3. Set up “Out-of-Home”**
- 2** Check to remember the password.
- 3** Check to remain logged-in to “Out-of-Home” at all times. When the app is restarted, if a connected unit is detected, a connection via domestic LAN is established. However, if no connected units are detected, “Out-of-Home” (Not at home) mode automatically starts. Automatically becomes unchecked if you log out from the App menu.
- 4** Tap to log in. When logged-in, the text displayed on the App menu changes to “Log out (At home) “In-Home””. To log out, tap “Log out (At home)” on the App menu.

# 5. Units overview (Home)

## 5.1. Overview

Set icons and names for the units.



[About the screen]

- 1 Tap to open/close the App menu.
- 2 Tap to refresh the screen.
- 3 Displays more options menu.
- 4 Displays icon, name of the unit and ID.  
To change units name → **5.2. Edit the names**
- 5 Tap to turn On/Off the unit.

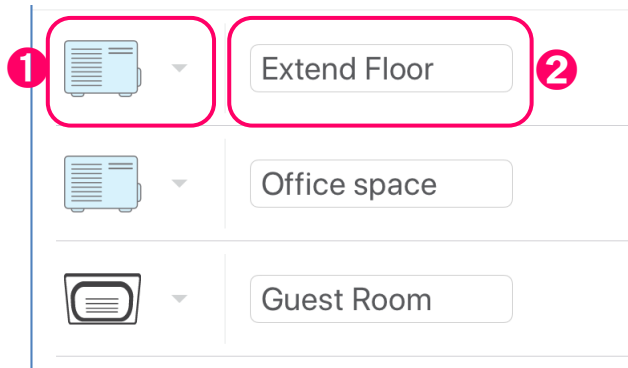
 : Unit is On

 : Unit is Off

# 5. Units overview (Home)

## 5.2. Edit Units

Set icons and names for the units.



[About the screen]

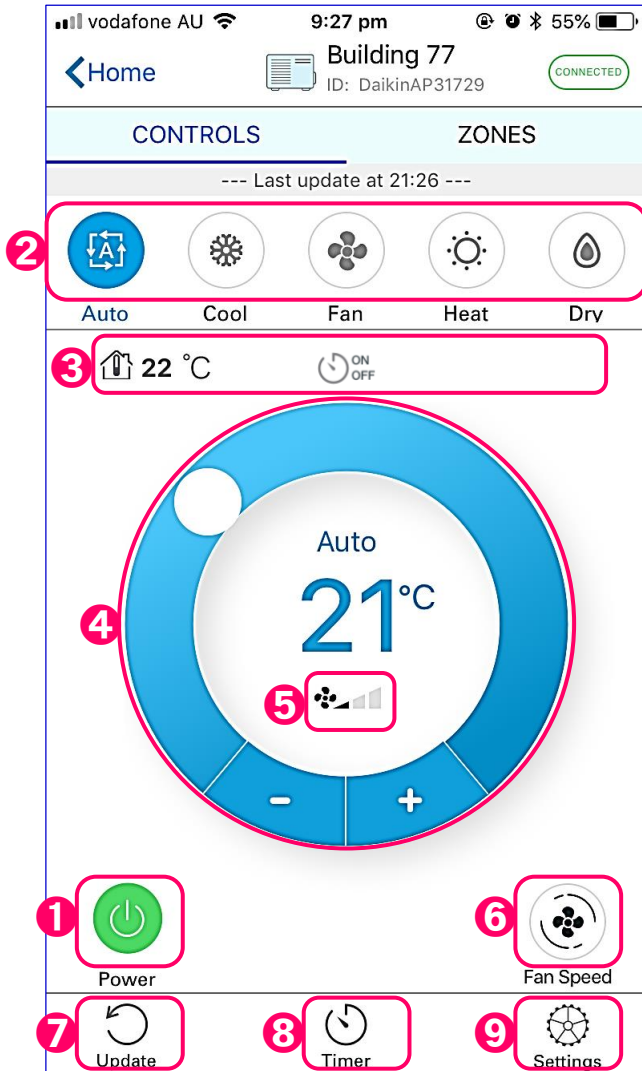
- 1 Tap to select the preferred icon for the unit.
- 2 Enter a name for the unit.

*[Note]*

*Please enter up to 16 characters for the unit name.*

# 6. Operation Setting

## 6.1. Operation Screen setting



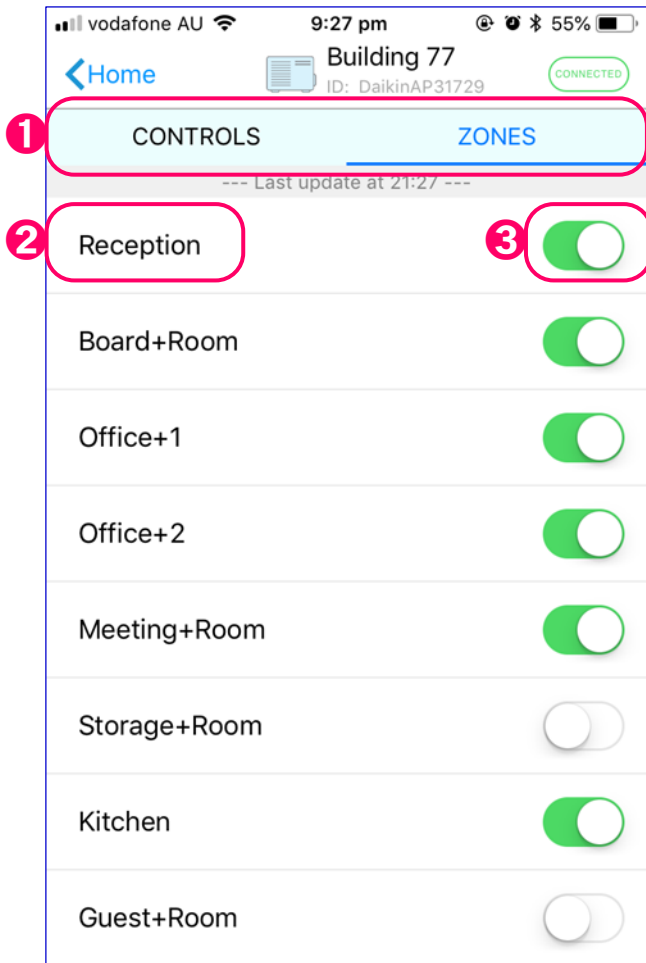
[About the screen]

- 1 Tap to turn On/Off the unit.
- 2 Displays operation mode. Tap to select operation mode. (Displayed items vary by unit model.)
- 3 Displays temperature and timer status. (Displayed items vary by unit model.)
- 4 Displays target temperature. Slide the “o” or tap “+ / -” to set target temperature.
- 5 Display Airflow rate.
- 6 Tap to set Airflow rate.
- 7 Tap to refresh the screen.
- 8 Tap to On/Off Timer the screen. → 7. On/Off Timer
- 9 Tap to open Adapter settings screen.

# 6. Operation Setting

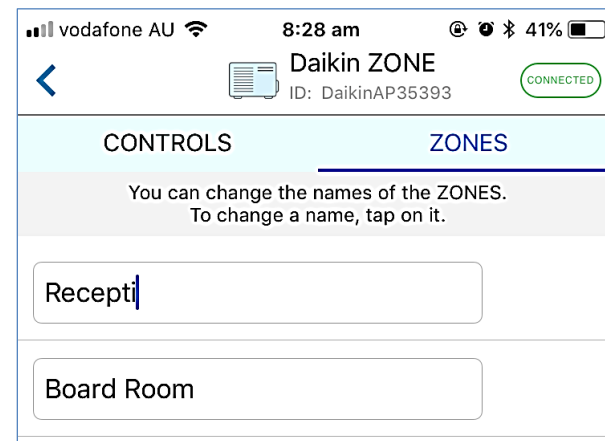
## 6.2. Zone Control setting

\*If the system is fitted with a Daikin Zone Controller, “ZONES” tab will be displayed on the operation screen.



[About the screen]

- 1 Tap to switch CONTROLS/ZONES screen.
- 2 Tap to edit zone name.  
You can register a name for each zone.  
(Limited to 12 characters)

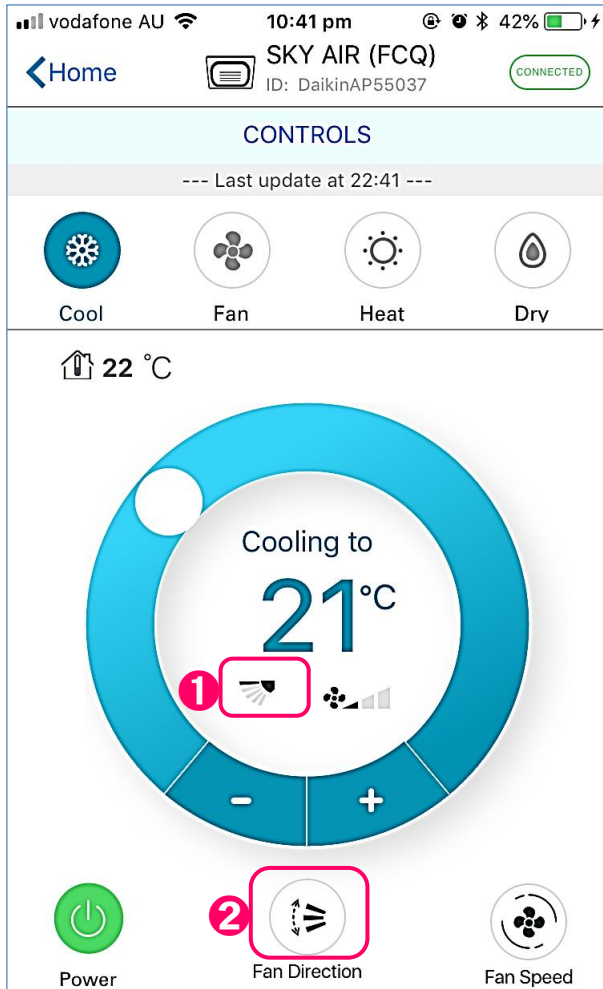


- 3 Slide to turn ON/OFF each ZONE.

# 6. Operation Setting

## 6.3. Airflow direction setting

\*If the App detects a Non Ducted indoor unit such as a cassette type or under ceiling unit the Airflow direction and its status symbol will be displayed.



[About the screen]

- 1 Displays Airflow direction.
- 2 Tap to set Airflow direction.

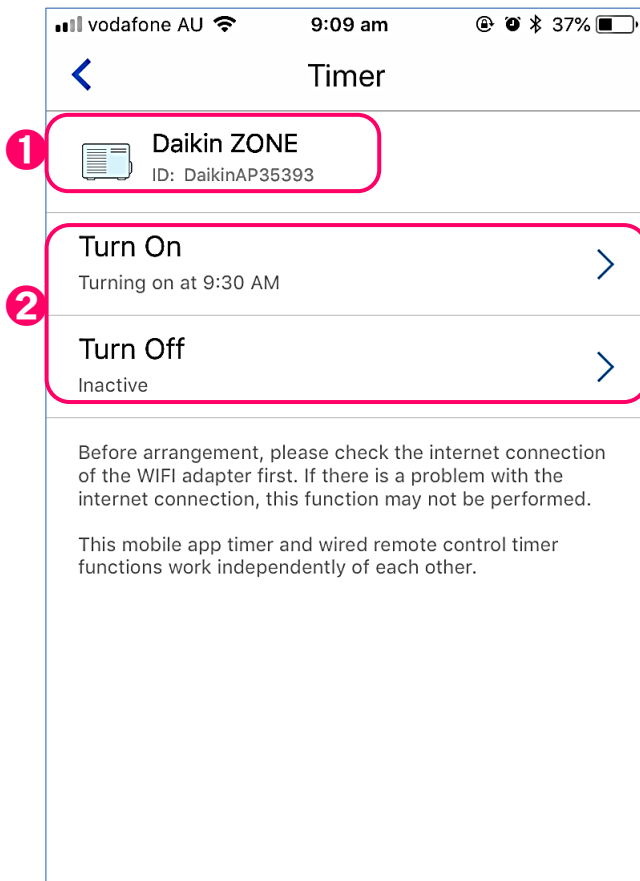


# 7. On/Off Timer

## 7.1. Overview

It supports On/Off timer. You can set the time in next 24 hours.

Tap on the On/Off Timer (  ) button. It's the button in the bottom of Operation Screen.



[About the screen]

- 1 Displays name of the unit.
- 2 Displays saved actions.

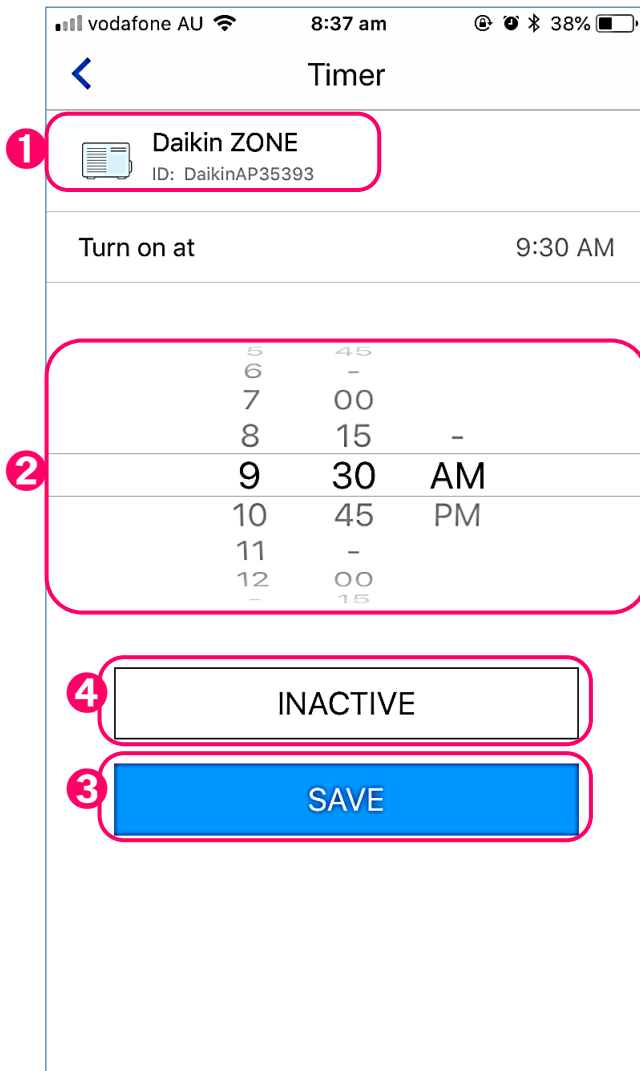
Tap (  ) to change those setting or inactive them.

*[Note]*

*This mobile app timer and wired remote control time functions work independently of each other.*

# 7. On/Off Timer

## 7.2. Edit action

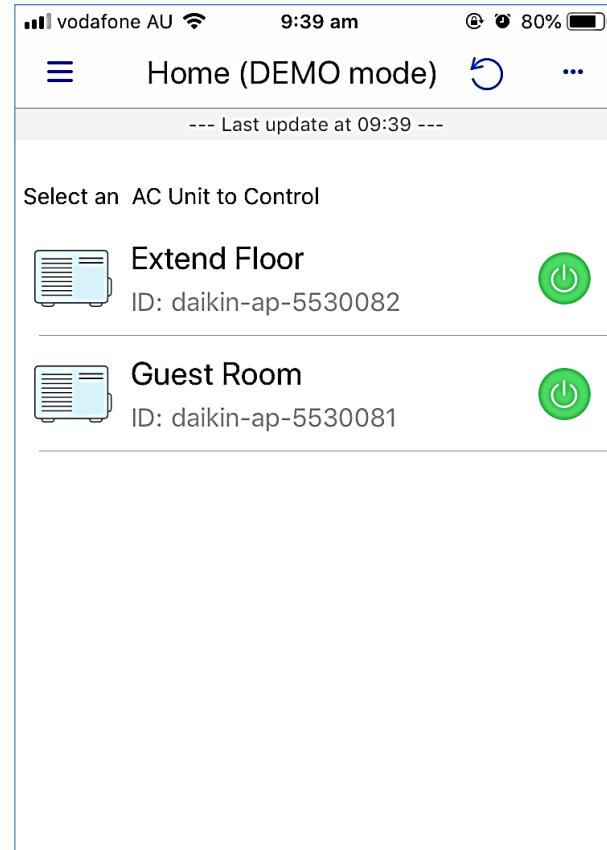
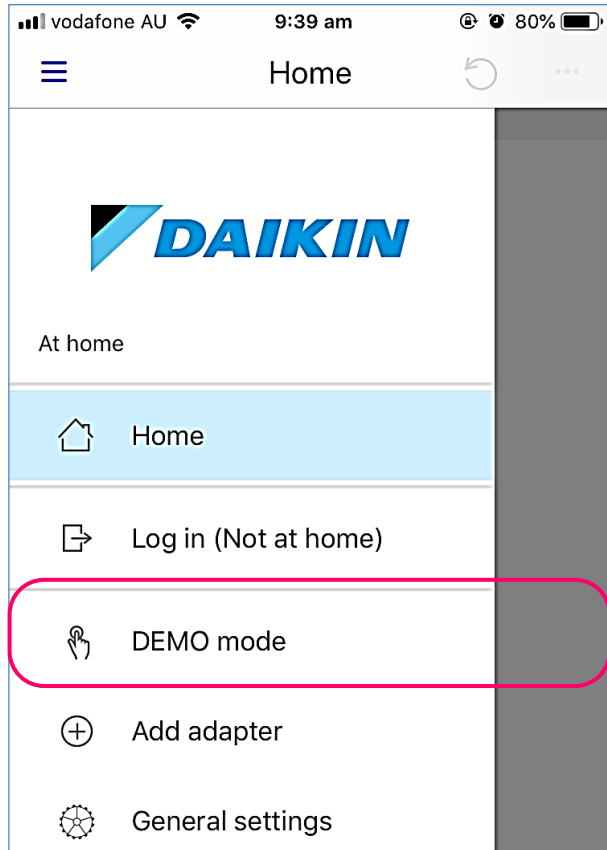


[About the screen]

- 1 Displays name of the unit.
- 2 Swipe up and down on the pickers to set the amount of time you want.
- 3 Tap to save.
- 4 Tap to be inactive the setting.

# 8. DEMO mode

Test out the app's functions even when a unit is not connected to a network. (Your smartphone must be connected to the internet to use DEMO mode.)



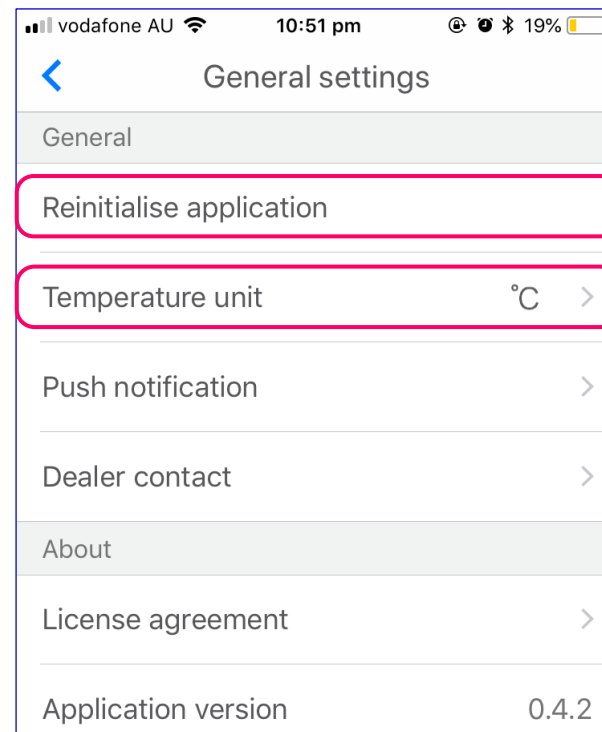
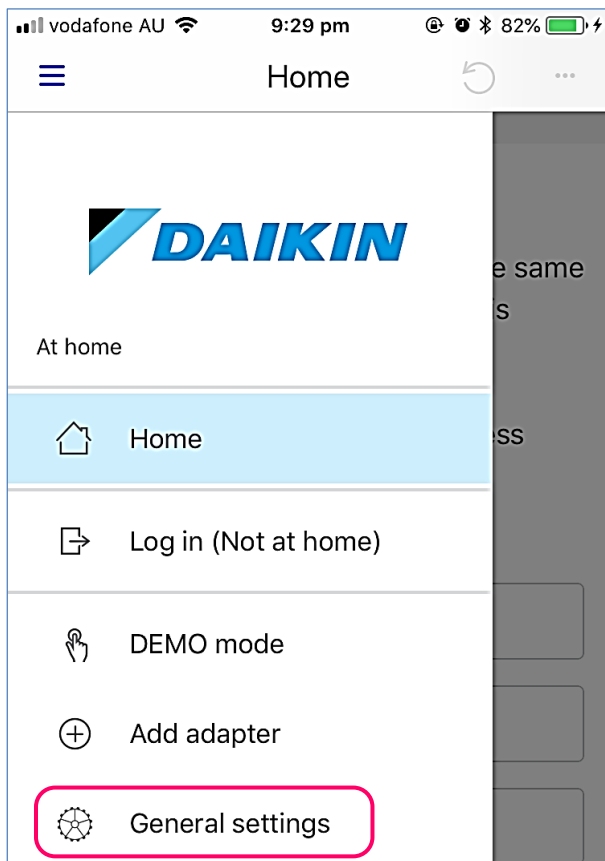
# 9. General settings

## 9.1. Reinitialize application

When you reinitialize the application, your login ID and password will be deleted from the login history.

## 9.2. Temperature unit

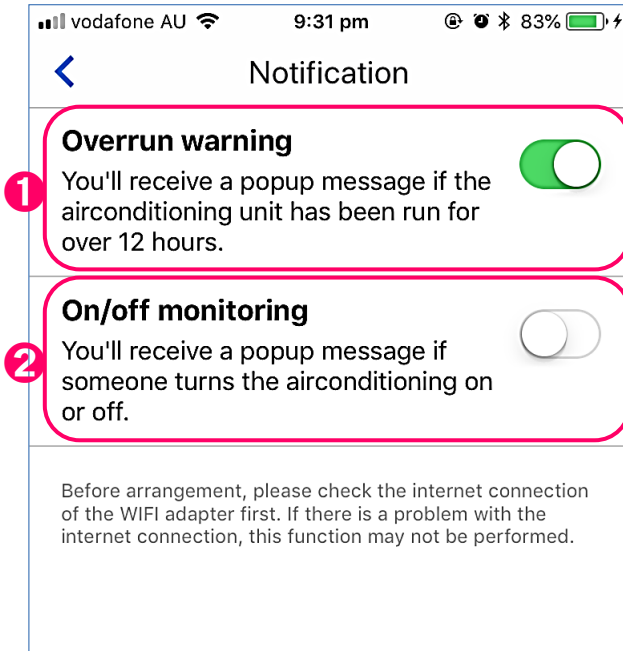
Switch between Celsius and Fahrenheit display.



# 9. General settings

## 9.3. Push notification

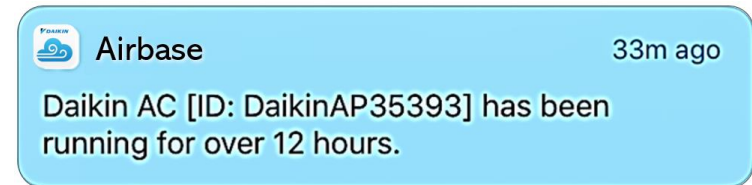
You can turn ON/OFF those notifications.



[About the screen]

- 1 You will receive a push-notification if your air conditioner has been run over 12 hours.
- 2 You will receive a push-notification if someone turns on/off your air conditioner.

(Example)



[Note]

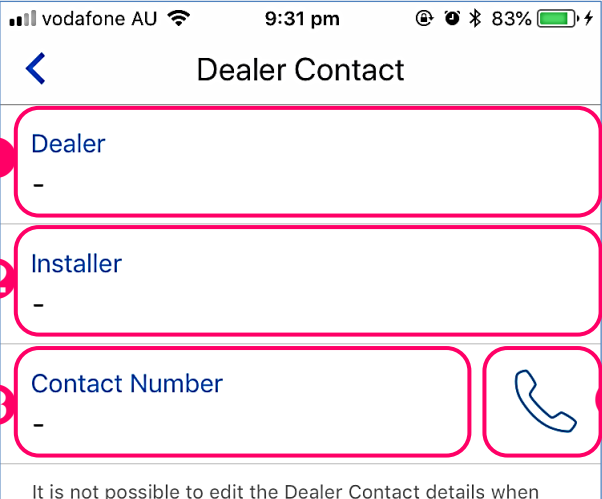
*It works only when connected via "Out-of-Home" (Not at home)" mode.*

# 9. General settings

## 9.4. Dealer Contact

The Dealer Contact function will allow contact details on your installer / Repair to be entered and stored so that you can easily recall their details should you need to contact in the future.

[About the screen]



The screenshot shows a mobile phone interface for the 'Dealer Contact' screen. At the top, the status bar shows 'vodafone AU', signal strength, Wi-Fi, time '9:31 pm', and battery '83%'. Below the status bar is a back arrow and the title 'Dealer Contact'. The main area contains three input fields: 'Dealer', 'Installer', and 'Contact Number', each with a red circle containing a number (1, 2, and 3 respectively) next to it. The 'Contact Number' field is followed by a red circle containing a number (4) next to a telephone handset icon. At the bottom, a small text note reads: 'It is not possible to edit the Dealer Contact details when'.

- 1 Tap to enter your dealer name.
- 2 Tap to enter your installer name.
- 3 Tap to enter the contact number.
- 4 Tap to make a call to your dealer's /installer's contact number if it's operated by your mobile phone.

[Note]

*Dealer Contact information will be stored in WLAN Adapter.*

*It is only possible to edit the Dealer Contact details when connected via "In-Home" (At home)" mode.*

# 9. General settings

## 9.5. License agreement

Displays the License agreement for the app.

## 9.6. Application version

Displays the version of the app.

# Appendix

## Available Functions

		Function	System Type		
			Ducted	Ducted with Zone Control	Cassette or under Ceiling
User Functions	Basic Functions	Power On/Off	✓	✓	✓
		Temperature Setting	✓	✓	✓
		Fan Speed Setting	✓	✓	✓
		Mode Selection #1	✓	✓	✓
		Zone On Off	-	✓	-
		Air Flow Direction	-	-	✓
	Timer Function	On Timer	✓	✓	✓
		Off Timer	✓	✓	✓
	Set Up	Configure Wi-Fi Settings	✓	✓	✓
		Enter Text for Zone names	-	✓	-
Additional Functions	Error Messages	✓	✓	✓	
	Room Temp Display	✓	✓	✓	
	Filter Clean Reminder	✓	✓	✓	
	Enter Service Contact Details	✓	✓	✓	
	Operation without Wi-Fi Access Point (AP mode)	✓	✓	✓	
	Secure Connection to Local Wi-Fi Network	✓	✓	✓	
	Push Notification	✓	✓	✓	
	Firmware update for new WLAN adapter	✓	✓	✓	
	Demo mode	✓	✓	-	
	Setup guide in App	✓	✓	✓	

#1 Displayed modes vary by unit model.



# NOTE

# NOTE

# NOTE

***DAIKIN AUSTRALIA PTY. LIMITED***

62-66 Governor Macquarie Road, Chipping Norton, NSW 2170 Australia  
Phone: 1300 36 24 38  
[www.daikin.com.au](http://www.daikin.com.au)

***DAIKIN AIRCONDITIONING NEW ZEALAND PTY. LIMITED***

525 Great South Rd, Penrose, Auckland 6, New Zealand  
[www.daikin.co.nz](http://www.daikin.co.nz)

***DAIKIN INDUSTRIES LTD.***

Head office:

Umeda Centre Building, 2-4-12 Nakazaki-Nishi  
Kita-Ku, Osaka 530-8323, Japan

Tokyo office:

JR Shinagawa East Building, 2-18-1 Konan  
Minato-ku, Tokyo 108-0075, Japan  
<http://www.daikin.com/>